

EVACUATION DIAGRAM

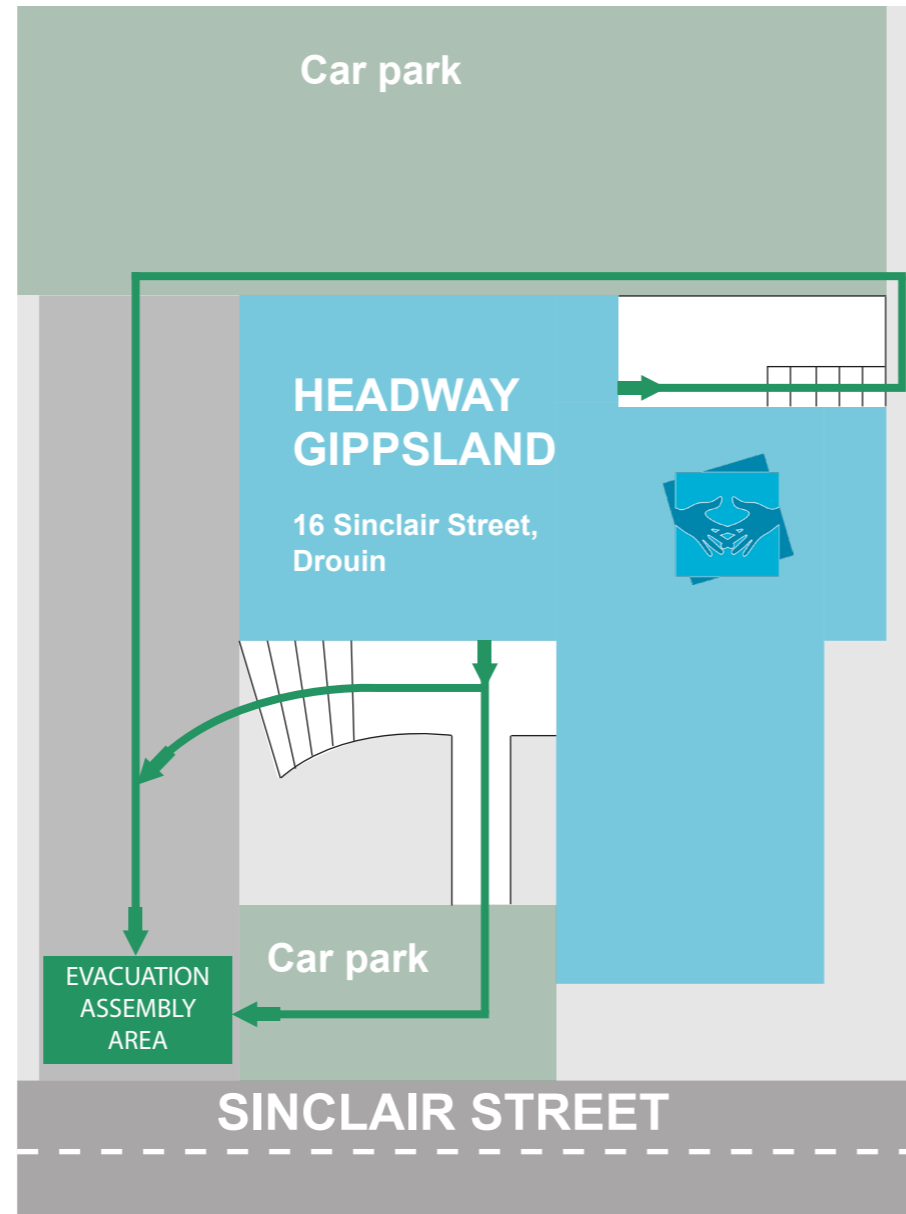


Headway Gippsland
16 Sinclair Street
Drouin VIC 3818

EMERGENCY PROCEDURES

- 1 RAISE THE ALARM, NOTIFY NEARBY OCCUPANTS
PHONE 000
- 2 ASSIST ANY PERSON IN DANGER
IF IT IS SAFE TO DO SO
- 3 MOVE TO THE NEAREST SAFE **EVACUATION ASSEMBLY AREA**
- 4 REMAIN AT THE **EVACUATION ASSEMBLY AREA**
REPORT ANYONE MISSING TO THE CHIEF WARDEN OR RESPONDING EMERGENCY SERVICES

EVACUATION ASSEMBLY AREAS

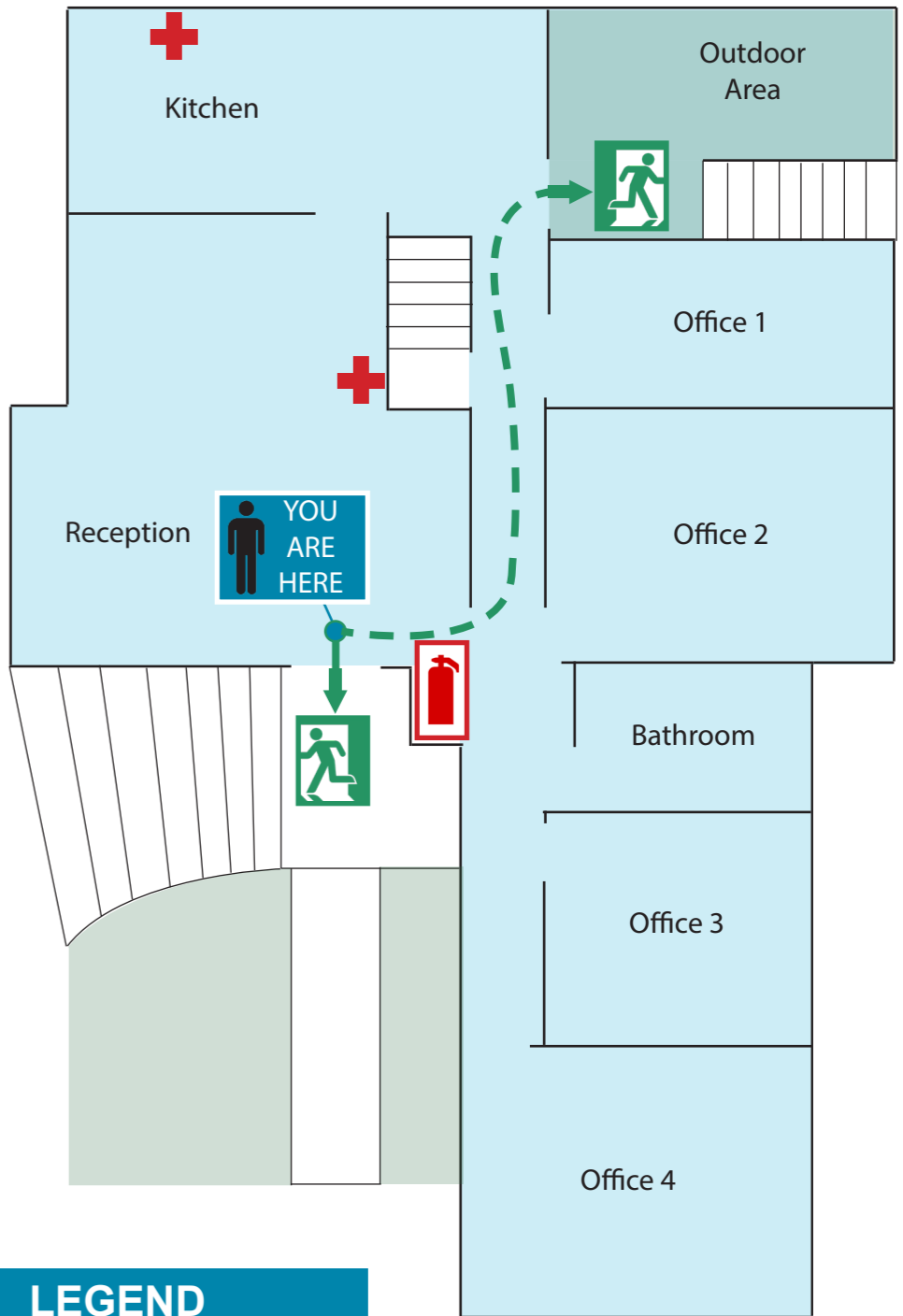


EMERGENCY TONES

- ALERT TONE
WHEN ADVISED BY CHIEF FIRE WARDEN
- STANDBY FOR FURTHER ANNOUNCEMENTS
- EVACUATION TONE
WHEN ADVISED BY CHIEF FIRE WARDEN
- COMMENCE EVACUATION

A B E DRY CHEMICAL FIRE EXTINGUISHER

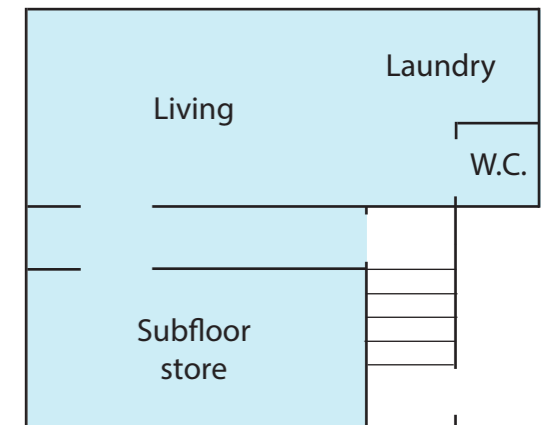
- CLASS A** Ordinary combustibles
- CLASS B** Flammable and combustible liquids
- CLASS E** Electrically-energised equipment



LEGEND

- Exit point
- First aid
- Fire extinguisher
- Evacuation route via front door
- Evacuation route via rear door

LOWER GROUND



EVACUATION DIAGRAM

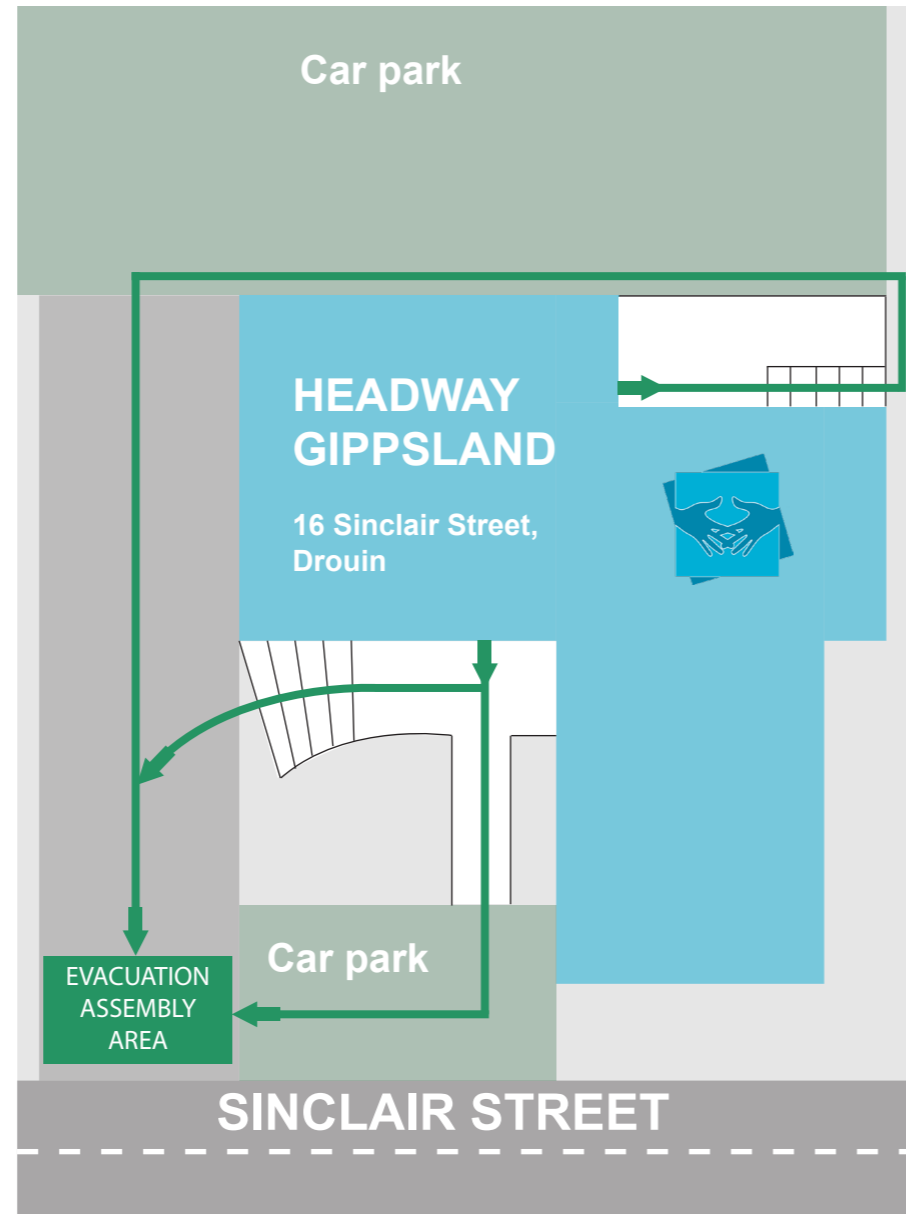


Headway Gippsland
16 Sinclair Street
Drouin VIC 3818

EMERGENCY PROCEDURES

- 1 RAISE THE ALARM, NOTIFY NEARBY OCCUPANTS
PHONE 000
- 2 ASSIST ANY PERSON IN DANGER
IF IT IS SAFE TO DO SO
- 3 MOVE TO THE NEAREST SAFE **EVACUATION ASSEMBLY AREA**
- 4 REMAIN AT THE **EVACUATION ASSEMBLY AREA**
REPORT ANYONE MISSING TO THE CHIEF WARDEN OR RESPONDING EMERGENCY SERVICES

EVACUATION ASSEMBLY AREAS

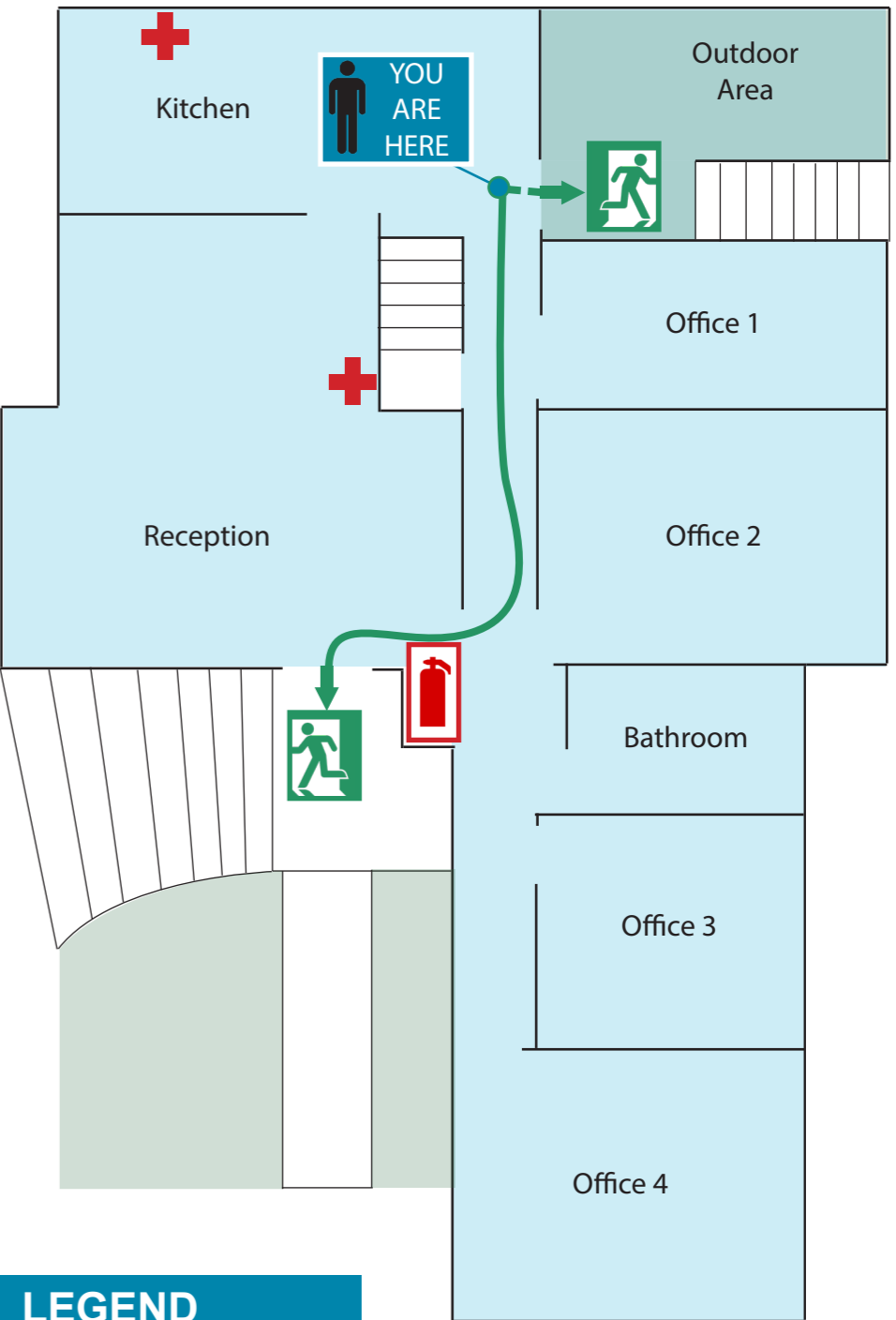


EMERGENCY TONES

- ALERT TONE
WHEN ADVISED BY CHIEF FIRE WARDEN
- STANDBY FOR FURTHER ANNOUNCEMENTS
- EVACUATION TONE
WHEN ADVISED BY CHIEF FIRE WARDEN
- COMMENCE EVACUATION

A B E DRY CHEMICAL FIRE EXTINGUISHER

- CLASS A** Ordinary combustibles
- CLASS B** Flammable and combustible liquids
- CLASS E** Electrically-energised equipment



LEGEND

- Exit point
- First aid
- Fire extinguisher
- Evacuation route via front door
- Evacuation route via rear door

LOWER GROUND

